

# HS 15.0 – HS 35.0

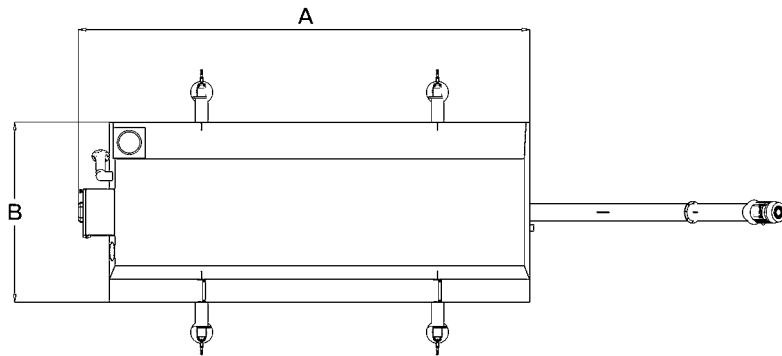
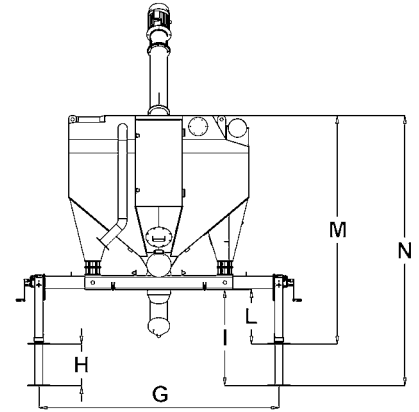
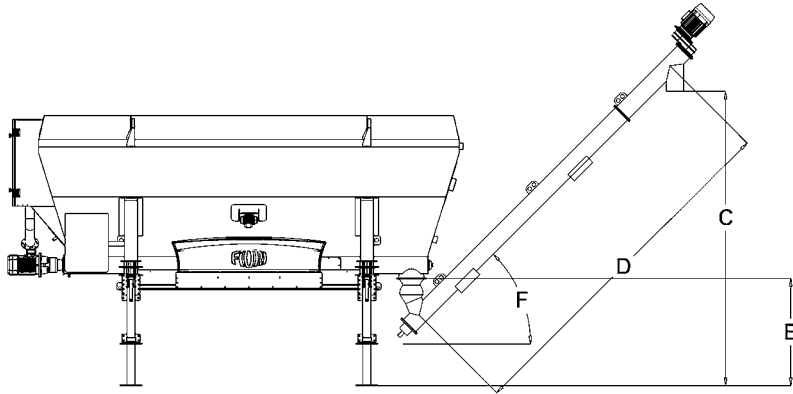


All pictures shown are for illustrative purposes only and may contain optional equipment.

## SILO SYSTEMS

The HS-series horizontal silos can be used for the on-site storage and batching of cement and other materials, such as lime or fly ash. Thanks to the simple adjustable telescopic lifting supports, they are easy to transport on trucks and therefore are quickly reusable on different construction sites. They do not need concrete slabs or anchorage systems to be positioned, nor any special permits. The FIORI HS-series cement dispensers are the ideal accessory for self-loading concrete mixers as they increase construction site productivity, eliminate dust during loading, provide a perfect storage facility for concrete, and increase batching accuracy. With standard features including a control unit and gravimetric weighing system with load cells, the HS silos can be used in manual or automatic mode. In automatic mode, they have a unique Bluetooth connection linking them up to the FIORI concrete mixers, via the proprietary CBV 2.0 system. This set-up allows the operator to independently load the amount of cement required by the specific mix formulation in use directly into the concrete mixer drum, without getting out of the vehicle and with mix traceability.

# FIORI



	HS 15.0	HS 35.0
A	5741	11875
B	2293	2293
C	3745	3745
D	4700	4700
E	1365	1365
F	45°	45°
G	3052	3052
H	530	530
I	1224	1224
L	694	694
M	2908	2908
N	3439	3439

\* measures in mm

FEATURES	HS 15.0	HS 35.0
Total storage capacity :	15.0 m <sup>3</sup>	35.0 m <sup>3</sup>
Max. capacity :	18T	42T
Unloading flow rate :	25 m <sup>3</sup> /h (> 500 kg./min)	25 m <sup>3</sup> /h (> 500 kg./min)
Diameter of extracting horizontal screw conveyor :	170/193 mm	170/193 mm
Diameter of inclined unloading screw conveyor :	219 mm	219 mm
Vibrator :	N°2	N°4
Loading system :	Pneumatic	Pneumatic
Load cells (weighing) :	laumas, compression	laumas, compression
Number of load cells :	4	6
Surface of the venting (dedusting) filter :	16 m <sup>2</sup>	16 m <sup>2</sup>
Filtering element (Donaldson) :	2	2
Fluidization :	6 nozzles	12 nozzles
Power supply :	380+480V; 50+60Hz	380+480V; 50+60Hz
Total absorbed power :	11.0 kW	14.0 kW
Water tanks :	600 lt/each, tot. 1200 lt	600 lt/each, tot. 2400 lt
Weight (unladen) :	4100 kg	7050 kg
Max gross weight :	23600 kg	51600 kg
Max. load on every supporting leg :	6200 kg	9000 kg
Transport :	20" BOX	40" BOX

## THE ADVANTAGES OF FIORI'S "HS" MODELS ARE THE FOLLOWS:

- Loads cells for checking the content weight while unloading.
- CANlink for remote control (Bluetooth) from CBV 2.0.
- Three ways of unloading: manual and automatic (through the Topcon display) or remotely (directly in recipe from vehicle through canlink).
- Internal dust filter (air cleaning) for which the material falls within the same silos.
- Polymer tanks for water storage.
- No need of permission for installation.
- Minimal environmental impact.
- Quick and easy disassembling, moving and reassembling in another site, with no need of cranes.
- Extreme flexibility of the unloading positions, the auger being rotatable by 190 degrees.
- No need of anchoring to the ground, thus more adaptable to "mobile" units.
- Transportable with no need of special trucks.
- Assembly and disassembly take place in a very short time thanks to 4 swivel feet.
- Very quick loading (25mc/h of product).
- Fluidization's air nozzles for facilitate the unloading of cement (automatically activated).
- Safety valve for pressure control mounted on the roof.