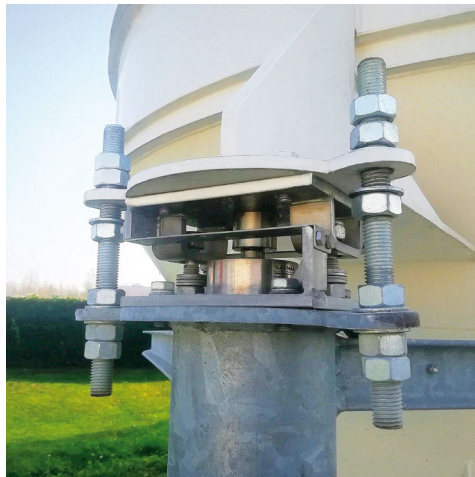


BS 2.0

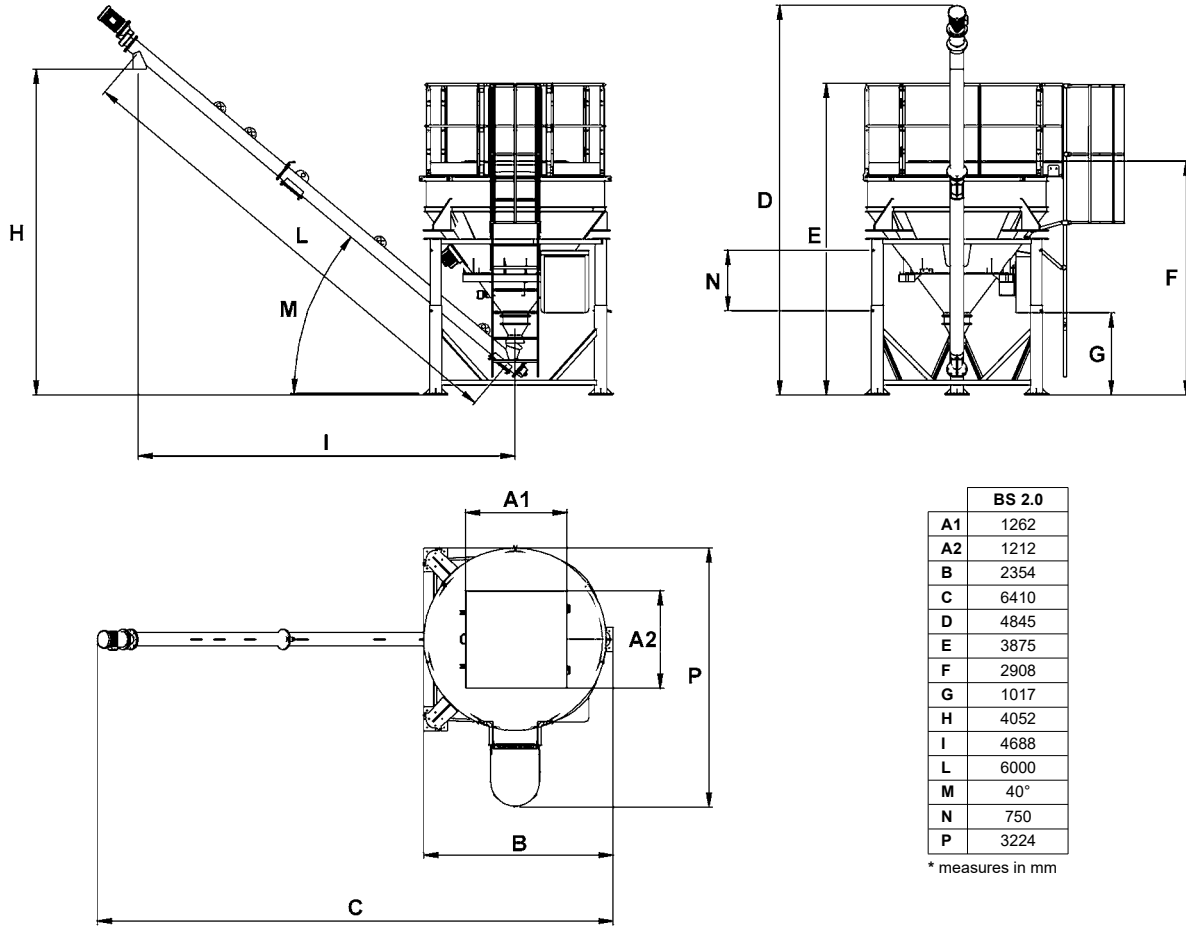


All pictures shown are for illustrative purposes only and may contain optional equipment.

SILO SYSTEM

The BS 2.0 is designed to provide a reliable, sturdy big bag-fed cement dispenser, given how easily big bags can be transported, stored, and emptied. Offering an alternative to the HS series horizontal silos for small sites and/or areas which cannot be reached with concrete mixing transport trucks, these dispensers do not require concrete slabs or anchorage systems to be positioned, nor any special permits. If equipped with the (optional) gravimetric weighing system with load cells, the BS 2.0 dispensers can be connected, via a Bluetooth link, to the FIORI concrete mixers using the proprietary CBV 2.0 system; in this case, the mixer operator can load the amount of cement required by the specific mix formulation in use, working independently and without leaving the vehicle, and using the batching system and weighing certification feature if necessary. BS 2.0 dispensers can conveniently be used as a connection between FIORI concrete mixers and already existing silos, thus providing the latter with the possibility of remote proportioning concrete from mixers with weighing certification.

FIORI



BS 2.0	
A1	1262
A2	1212
B	2354
C	6410
D	4845
E	3875
F	2908
G	1017
H	4052
I	4688
L	6000
M	40°
N	750
P	3224

* measures in mm

FEATURES	BS 2.0
Total storage capacity :	2.0 m ³ (2,5T)
Maximum unloading rate :	20 m ³ /h (> 430 kg/min.)
Diameter of inclined unloading screw conveyor :	168 mm
Loading system :	Big Bag
Load cells (weighing) :	laumas, compression
Number of load cells :	3
Power supply :	380+480V; 50+60Hz
Total absorbed power :	4.5 kW
Weight (unladen) :	1550 kg
Max gross weight :	4800 kg
Transport :	20" BOX

THE ADVANTAGES OF FIORI'S "BS" MODELS ARE THE FOLLOWS:

- Loads cells for checking the content weight while unloading.
- CANlink for remote control (Bluetooth) from CBV 2.0.
- Three ways of unloading: manual and automatic (through the Topcon display) or remotely (directly in recipe from vehicle through canlink).
- No need of permission for installation.
- Minimal environmental impact.
- No need of anchoring to the ground, thus more adaptable to "mobile" units.
- Transportable with no need of special trucks.
- Very quick loading (20mc/h of product).
- The vibrator helps cement unloading.
- Ladder and railing for operator work at a height.
- Safety grid for the upper opening.
- Closing hatches.
- Cement loading from the Big Bag with or without the specific opening in the bag bottom.
- Suitable for HS B22 horizontal silo loading.
- Suitable for loading from other silos, even vertical ones, by screw conveyor.